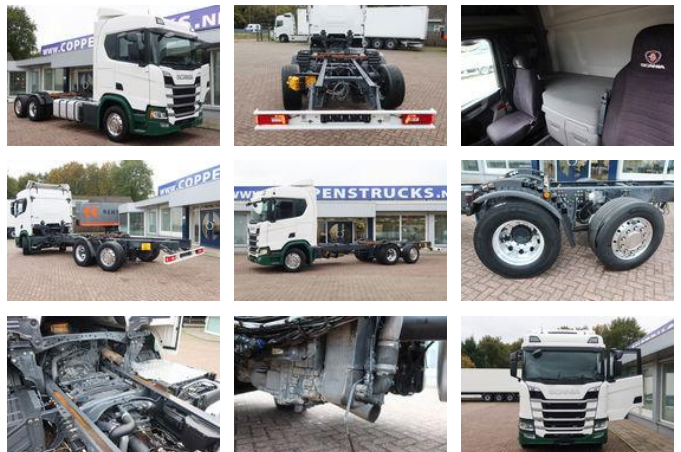




Scania R500 NGS 6x2 Chassis, Stuur lift as

General features

Brand	Scania
Model	R500 NGS
Subcategory	Chassis cab
Odometer reading	534.000km
Construction year	2019
Color	White
Condition	Used
Emission class	Euro 6
Reference	538064



Characteristics

Empty weight	11.680kg
Load capacity	14.220kg
GVW	26.000kg
Cabin	Sleeper cabin

Scania R500 NGS 6x2 Chassis, Stuur lift as

Technical specifications

Number of axes	3
Axis configuration	6x2
Transmission	Automatic
Engine output	500kw

Accessories

- Alarm
- Central doorlocking
- Airbag
- Lock diff
- Rear air suspension
- Parking air conditioning / roof air conditioning
- Alcoa rims
- Outside temperature display
- Anti-lock braking system
- Air conditioning
- Aluminium fuel tank
- Roof spoiler
- Electrically operated windows
- Refrigerator
- Fog lights
- Navigation system
- Sleeper cab
- Vehicle heater
- Visor
- Central lubrication system
- Intarder
- Heated driver's seat
- ASR
- Electrically adjustable exterior mirrors