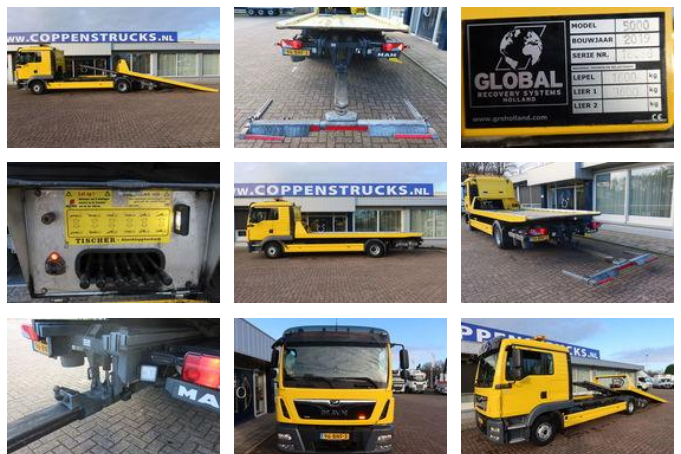




MAN TGL 12.220 Takel-Bergingswagen 6 Persoons cabine

General features

| | |
|-------------------|--------------|
| Brand | MAN |
| Model | TGL 12.220 |
| Subcategory | Tow-recovery |
| Licence plate | 96-BNF-3 |
| Odometer reading | 238.000km |
| Construction year | 2019 |
| Color | Yellow |
| Condition | Used |
| Fuel | Diesel |
| Emission class | Euro 6 |
| Reference | 96-BNF-30 |



Characteristics

| | |
|---------------|----------|
| Empty weight | 7.460kg |
| Load capacity | 4.530kg |
| GWV | 11.990kg |
| Cabin | No |

MAN TGL 12.220 Takel-Bergingswagen 6 Persoons cabine

Technical specifications

| | |
|--------------------|-----------|
| Number of axes | 2 |
| Axis configuration | 4x2 |
| Transmission | Automatic |
| Engine output | 220hp |

Accessories

- Lock diff
- Radio
- Towbar
- Rear air suspension
- Toolbox stainless steel 2x
- Outside temperature display
- Cruise control
- Anti-lock braking system
- Air conditioning
- Twin fuel tank
- Electrically operated windows
- Fog lights
- Navigation system
- PTO
- Heavy duty engine brake
- Spotlights
- Visor
- Central doorlocking
- Electrically adjustable exterior mirrors